

Athletics



**BLACK DOG
SPORTSWEAR**
m: 0429 987 692
e: sales@blackdogswear.com.au
w: www.blackdogswear.com.au

Expect outstanding performances in our range of top-notch athletics apparel

When you're pushing your body to the limit you are looking for any small measure to aid your performance. Our stylish athletics apparel not only looks great but feels light and comfortable and easy to wear. The wide range of garment styles and endless design options ensure there are alternatives for all team members.

Simply choose to update your current athletics gear, or completely overhaul your team's image. It's easy when you customise our studio designs with your team colours and logos or discuss a full design service with us.



SINGLET

Athletics singlet

- self fabric neckline & armholes
- scalloped hem
- Micromesh - cool/dry fabric
- modern fit

Pattern 108 - mens adult sizes XS - 5XL

Pattern 109 - ladies adult sizes 8 - 24



RUNNING SHORTS

T-SHIRT

Running shorts

- elastic waist with drawstring cord
- side openings
- Taslon fabric
- modern fit

Pattern 118A - unisex sizes XS - 5XL

T-shirt

- self fabric neckline
- crew neck
- set in sleeve
- Micromesh - cool/dry fabric
- modern fit

Pattern 900 adult unisex sizes XS - 5XL

Pattern 906 adult ladies sizes XS - 5XL

Pattern 907 youth ladies sizes 4Y-16Y

Pattern 905 youth mens sizes 4Y-16Y

A woman with blonde hair in a bun is posing on a red running track. She is wearing a red and blue athletic crop top and blue boy leg shorts. The front view shows a Ford logo on the top and a USA logo on the shorts. The back view shows 'SAINTS ATHLETICS CLUB' on the top. The background is a green field and trees.

CROP TOP

BOYLEG SHORTS

Ladies crop top

- sleeveless
- racer back
- Poly Spandex fabric
- modern athletic fit

Pattern 289 - ladies adult sizes XS - 5XL

Boy leg shorts

- elastic waist
- Poly Spandex fabric
- modern athletic fit

Pattern 281 - unisex adult sizes XL - 5XL

Pattern 282 - unisex youth sizes 4Y - 16Y

A man with short brown hair, wearing a red and black athletic singlet and black shorts with red side panels, stands with his hands on his hips. He is positioned in front of a black metal railing. Behind the railing is a body of water, and in the background is a city with various buildings and a hillside under a clear blue sky. The singlet has a red upper half with a black silhouette of runners and a black lower half. The shorts have a black waistband and red side panels with the word 'Mars' in white script. The word 'POWERADE' is visible on the lower right leg of the shorts.

SINGLET

ELITE SHORTS

Athletics singlet with side panels

- round neck
- Trimesh side panels
- Micromesh - cool/dry fabric
- modern fit

Pattern 1280 - mens adult sizes XS - 5XL

Elite shorts

- elastic waist with drawstring cord
- Trimesh side and rear panels
- Titan fabric
- modern fit

Pattern 1461 - mens adult sizes XS - 5XL

Pattern 1462 - mens youth sizes 4Y - 16Y

Pattern 1463 - ladies adult sizes 8 - 24

Pattern 1464 - ladies youth sizes 4Y - 16Y



Athletics fabrics



Micromesh

An advanced lightweight mesh knit fabric built for optimal moisture transfer, fast drying and good sun protection.

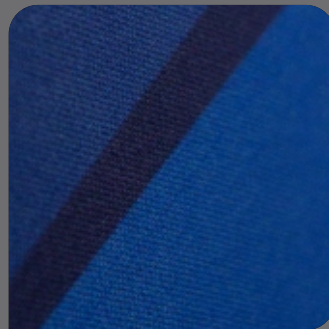
- 120gsm & 165gsm
- 100% polyester
- hydrophilic treatment
- Ideal for polo shirts, singlets, t-shirts



Trimesh

An open weave lightweight fabric with high stretch, constructed for optimal air flow. During high energy activities this fabric keeps the wearer cool and dry.

- 130gsm
- 100% polyester
- excellent for panelling
- ideal for panelling in polo shirts, singlets and shorts



Taslon

This light weight woven fabric is moderately water repellent and delivers modest warmth and comfort.

- 140gsm
- 100% polyester
- outerwear with a soft single Jersey lining
- ideal for shorts



Poly Spandex

The 4-way stretch of this bright white base tricot fabric offers extra comfort and freedom of movement to enhance performance. Moisture management properties make it resistant to perspiration stains.

- 220gsm
- 80% polyester/20% spandex
- excellent for high resolution images & rich colours
- ideal for crop tops, shorts, skirts, fitted tops and briefs